

Changing Liners

Things needed: new liners, liner installation tool

1. Silicone liners need to be changed every 10,000 milkings Rubber liners need to be changed every 2500 milkings.

Changing Silicone Liners

You will need a liner installation tool.

1. Take the robot out of operation.



2. Tap
3. Tap **Actions**
4. Tap **All Actions**
5. Tap **Replace the liners.**
6. At **Move robot arm to service position**, press **Start**.
7. At **Cord Cups** press **Loose**

Removal of the liners

1. Turn the shell counterclockwise until you can remove it from the milk collector.
2. Make sure the milk collector cup is clean.
3. If necessary, clean the milk collector cup.
4. Pull the liner at the upper side to remove it from the shell.

Installation of the liners

1. Install the liner on the teat cup installation tool.
2. Make sure the mark on the liner is lined up with the mark on the installation tool.
3. Pull the installation tool with the liner in the shell.
4. Push the upper part of the liner on the shell.
5. Make sure the mark on the liner is lined up with the mark on the shell.
6. Pull the liner with the liner installation tool in the shell.
7. Examine the O-ring on the shell for damage, if necessary, replace the O-ring
8. Install the teat cups in the milk collectors and turn them clockwise while holding the milk collector into place.

Before leaving

1. On the robot screen at **Cord cups** select button **Fixed**
2. At **Move arm to position** select **done**. The robot arm will move to the home position and the exchange date of liners will be saved in Horizon.

Changing Rubber Liners

- Rubber liners need to be changed every 2500 milkings.
- You will need hose scissors.

Preparation

1. Take the robot out of operation.



2. On the robot screen, select
3. Tap **Actions**
4. Tap **All Actions**
5. Tap **Replace the liners.**
6. At **Move robot arm to service position** button **start**
 - a. The robot arm moves to the service position.
7. At **Tilt Cups**, select **Straight**
8. At **Cord Cups** select **Loose**

Removal

- Do these steps on all 4 liners.
1. Turn the shell counterclockwise until you can remove them from the milk collector.
 2. Make sure the milk collector cup is clean.

3. If necessary, clean the milk collector cup.
4. Cut off the bottom part of the rubber liner.
5. Pull the rubber liners out.

Installation

- Do the steps on all 4 liners.
 1. Make sure the milk collector cup is clean.
 2. If necessary, clean the milk collector cup.
 3. Install the O-ring on the shell.
 4. Install the rubber liner in the shell.
 5. Push the upper part of the liner on the shell.
 6. Make sure the mark on the liner is lined up with the mark on the teat cup sleeve shell.
 7. If necessary, turn the liner.
 8. Pull the appendix until the lock ring engages correctly in the bottom of the shell.
 9. Make sure the liner is not twisted in the shell.
 10. Cut the appendix using the hose scissors.
 11. Install the shell in the milk collector cup.

Before leaving

1. On the robot screen, at **Cord Cups** select **Fixed**.
2. At **Move arm to home position**, select **Done**.
 - a. The robot arm moves to the home position and the exchange date of liners is saved in Horizon.

Put the robot back in operation.

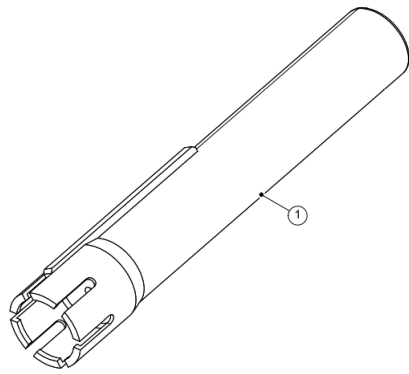


Figure 74. Installation tool

KEY:
1. Liner installation tool

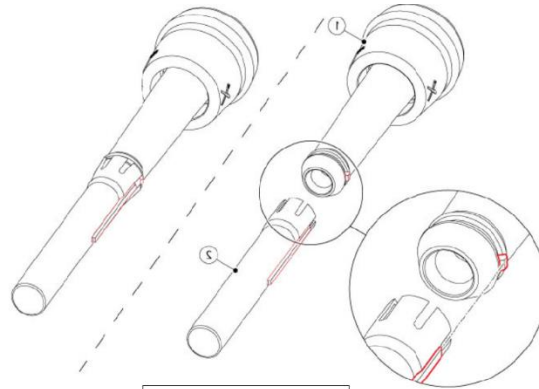


Figure 75

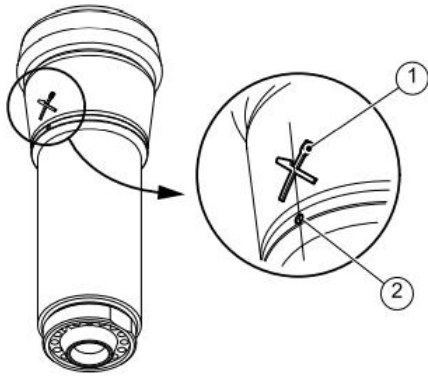


Figure 79. Align a rubber liner

KEY:
1. Alignment mark liner - 2. Alignment mark shell

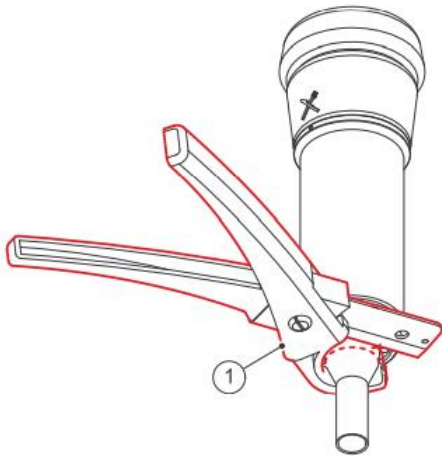
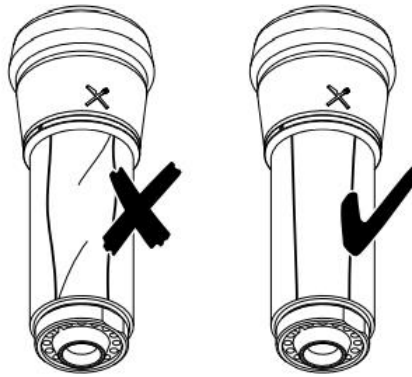


Figure 80. Hose scissors

KEY:
1. Hose scissors